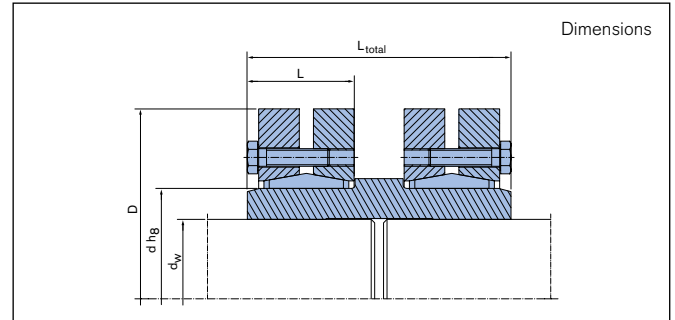
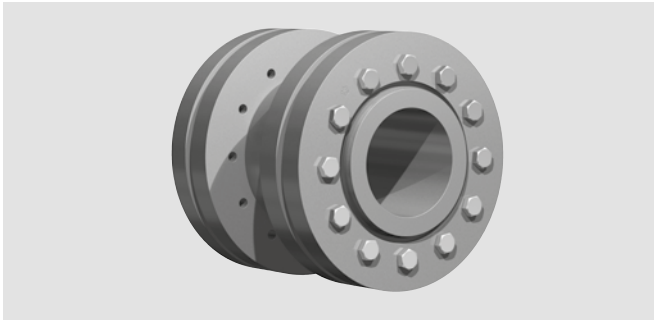


RINGFEDER® Shaft Couplings

RfN 5071



d = Inner diameter
D = Outer diameter
d_w = Solid shaft diameter

L_{total} = Total length (several parts)
L = Overall width
T_A = Max. tightened torque of the screws

T = Transmissible torque at given **T_A**
F_{ax} = Transmissible axial force
D_G = Thread

Shaft couplings dimensions					T _A	Transmissible torques or axial forces		Locking screws		
d	x	D	d _w	L _{total}		L	T	F _{ax}		ISO 4014 / 4017 - 10.9
mm					Nm	Nm	kN	D _G		
20	x	46	15	45	21	4	110	20	M5	For all shaft couplings intermediate values for T and F _{ax} can be calculated dependent on T _A and the clearance S. In addition, stepped shaft couplings are available for different shaft diameters. If required, we like to be of assistance.
			16				22			
			17				24			
24	x	50	19	50	23	5	240	32	M5	
			20				35			
			21				38			
30	x	52	24	55	26	5	350	38	M5	
			25				41			
			26				43			
36	x	72	28	65	28	12	590	53	M6	
			30				58			
			31				58			
40	x	72	30	65	29	12	720	61	M6	
			31				59			
			32				62			
44	x	80	32	70	30	12	800	63	M6	
			35				73			
			36				76			
50	x	90	38	80	32	12	1.350	89	M6	
			40				96			
			42				103			
55	x	100	42	85	35	12	1.300	78	M6	
			45				87			
			48				96			
62	x	110	48	90	35	12	2.400	126	M6	
			50				133			
			52				136			
68	x	115	50	100	35	12	1.900	95	M6	
			55				104			
			60				121			



